

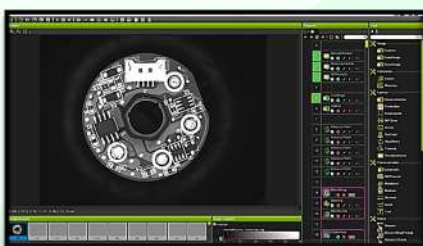
WIZER PRO VISION SOFTWARE



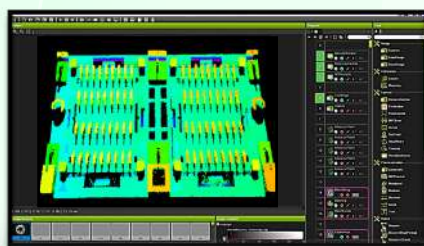
Wizer Pro vision software offers high performance, power and flexibility to solve your machine vision applications. This software is a configurable machine vision software, developed using robust library of pattern matching, code reading, alignment and metrology.

It also offers an easy-to-use graphical interface to develop your application. A wide range of industrial camera brands are integrated to this software to allow user flexibility selection of cameras.

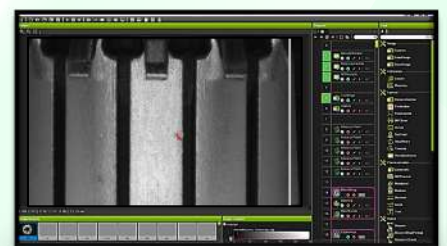
Wizer Pro vision software with the 2D inspection tools has a combination of 3D inspection, Machine Learning as well as Deep Learning modules. This software environment ease the application development for your inspection and graphical interface, with intuitive drag & drop concept; without the need for programming. This offers a higher degree of convenience for the user with increased productivity and efficiently in developing as well as deployment of your machine vision needs.



2D INSPECTION



3D INSPECTION

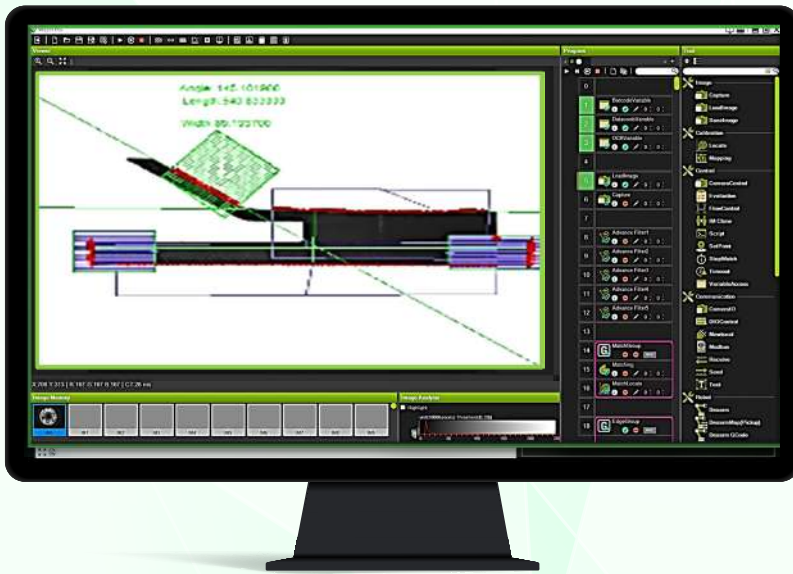


**MACHINE/DEEP
LEARNING**

WIZER PRO VISION SOFTWARE

Wizer Pro vision software offers a integrated development environment to allow user to drag-and-drop interface to create your inspection as well as your graphical interface.

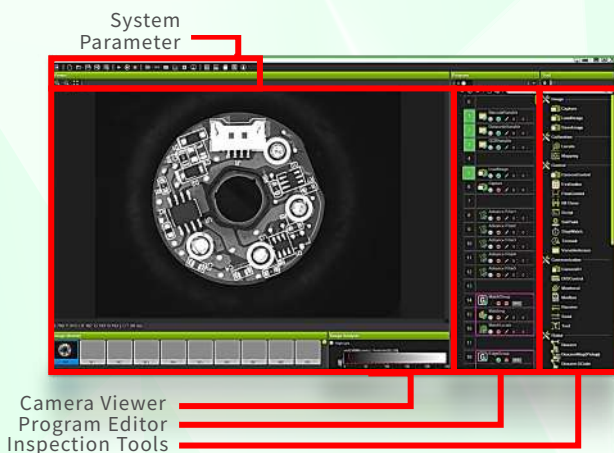
Wizer vision tool library contain a wide range of tools for most common vision processing tasks, such as matching, measurement, code reading etc. User can also expand by adding your own customized inspection tools to suit any project application.



Key Features:

- o Quick and flexible applications development
- o Powerful and robust inspection tools
- o Multi-image processing on cameras with maximum performance
- o Offers standard vision tools like image acquisition, alignment, measurement & code reader
- o A common platform software for different applications

WIZER PRO CONFIGURATOR



The Wizer Pro Configurator has always been focused to be with “simplicity” and aims to minimize the learning curve for inexperienced users and eliminates the need to learn a programming language.

CUSTOMIZED YOUR INTERFACE

The Wizer Pro UI Designer allow user to create graphical user interface through panels of button and windows display. The designer links the widgets to those parameters of the tools used in the inspection program. The parameter values can be adjusted & for visualization. Multiple levels of password protection on controls for managing the inspection configurations.



VISION CONTROLLER CX-2100G SERIES



High Performance Machine Vision Controller For Your Vision Application

CX-2100G Series					
No. of Camera Supported					
1.3MP	2.0MP	5.0MP	10MP	12MP	20MP
1 - 3 Cameras	1 - 2 Cameras	1 - 2 Cameras	1 - 2 Cameras	1 Camera	1 Camera

System Core	
CPU	Intel® Apollo Lake Atom CPU J3455E
Memory	4GB RAM
Storage	64G (SSD)
Operating System	
OS	Windows 10 IoT Ent (64bit)
Graphic	
Display	1 x HDMI
Camera Interface	
GigE	2-CH Gigabit (POE)
I/O Interface	
Ethernet	2 x GbE ports
DI/O	8DI, 8 DO
Lighting Control	2 x Channel
USB	2x USB2.0, 2 x USB3.0 & 1 x USB2.0 internal
Serial	1 x RS-232
Power Supply	
DC	24V DC
Physical	
Dimension	175 x 126 x 60mm (W x H x D)
Weight	~ 2.4KG
Certification / EMC	CE / FCC / RoHS

VISION CONTROLLER CX-8000G SERIES



CX-8500G					
No. of Camera Supported					
1.3MP	2.0MP	5.0MP	10MP	12MP	20MP
1 - 4 Cameras	1 - 4 Cameras	1 - 4 Cameras	1 - 4 Cameras	1 - 2 Cameras	1 - 2 Cameras
CX-8700G					
No. of Camera Supported					
1.3MP	2.0MP	5.0MP	10MP	12MP	20MP
1 - 4 Cameras	1 - 4 Cameras	1 - 4 Cameras	1 - 4 Cameras	1 - 4 Cameras	1 - 4 Cameras

Model	CX-8500G	CX-8700G
CPU	Intel® Core™ i5-8500	Intel® Core™ i7-8700
Memory	8GB RAM	
Storage	128G mSATA (SSD)	
Operating System	Windows 10 IoT Ent (64bit)	
Graphic Display	1 x DVI, 1 x HDMI	
GigE	4-CH Gigabit (POE)	
Ethernet	2 x GbE ports	
DI/O	8DI (NPN / PNP), 8 DO	
Lighting Control	4 x Channel (Max. 1A per channel)	
USB	4 x USB3.0 + 1 x USB2.0 internal	
Serial	2 x RS-232/422/485	
Power Supply	12~24V DC +-10%. Must be DC24V input when using light control.	
Dimension	200 x 154 x 75mm (W x H x D)	
Weight	~ 2.4KG	
Certification / EMC	CE / FCC Class A	

AREA SCAN CAMERA

1.3MP, 60FPS, GLOBAL

Sensor	
Sensor Vendor	e2v
Sensor	EV76C560
Shutter	Global
Sensor Format	1/1.8"
Sensor Diaganol	8.68mm
Sensor Type	CMOS
Sensor Size	6.8mm x 5.4mm
Resolution (H x V)	1282px x 1026px
Resolution	1.3MP
Pixel Size (H x V)	5.3 μm x 5.3 μm
Frame Rate	60fps
Mono/Color	Mono
Camera Data	
Interface	GigE
Synchronization	Ethernet connection, free-run, hardware trigger
Exposure Control	programmable via the camera API
Digital Input	1
Digital Output	1
Power Supply	PoE or 12 VDC
Housing	
Housing Type	Box
Housing Size (L x W x H)	42mm x 29mm x 29mm
Weight	90g
Lens Mount	C-mount
Operating Temperature	0 °C - 50 °C

AREA SCAN CAMERA

5.0MP, 14FPS, ROLLING

Sensor	
Sensor Vendor	onsemi
Sensor	MT9P031
Shutter	Rolling
Sensor Format	1/2.5"
Sensor Diaganol	7.13mm
Sensor Type	CMOS
Sensor Size	5.7mm x 4.28mm
Resolution (H x V)	2592px x 1944px
Resolution	5MP
Pixel Size (H x V)	2.2 μm \times 2.2 μm
Frame Rate	14fps
Mono/Color	Mono
Camera Data	
Interface	GigE
Synchronization	Ethernet connection, free-run, hardware trigger
Exposure Control	hardware trigger, programmable via the camera API
Digital Input	1
Digital Output	1
Power Supply	PoE or 12 VDC
Housing	
Housing Type	Box
Housing Size (L x W x H)	42mm x 29mm x 29mm
Weight	90g
Lens Mount	C-mount
Operating Temperature	0 $^{\circ}\text{C}$ - 50 $^{\circ}\text{C}$

AREA SCAN CAMERA

5.0MP, 23FPS, GLOBAL

Sensor	
Sensor Vendor	Sony
Sensor	IMX264
Shutter	Global
Sensor Format	2/3"
Sensor Diaganol	11.02mm
Sensor Type	CMOS
Sensor Size	8.45mm x 7.07mm
Resolution (H x V)	2448px x 2048px
Resolution	5MP
Pixel Size (H x V)	3.45 μm x 3.45 μm
Frame Rate	23fps
Mono/Color	Mono
Camera Data	
Interface	GigE
Exposure Control	hardware trigger, programmable via the camera API
Digital Input	1
Power Supply	PoE or 12 VDC
Housing	
Housing Type	Box
Housing Size (L x W x H)	42mm x 29mm x 29mm
Weight	90g
Lens Mount	C-mount
Operating Temperature	0 °C - 50 °C

AREA SCAN CAMERA 10MP, 8FPS, ROLLING

Sensor	
Sensor Vendor	Sony
Sensor	IMX226
Shutter	Rolling
Sensor Format	1/1.7"
Sensor Diaganol	9.33mm
Sensor Type	CMOS
Sensor Size	7.44mm x 5.61mm
Resolution (H x V)	2448px x 2048px
Resolution	12.2MP
Pixel Size (H x V)	1.85 μm \times 1.85 μm
Frame Rate	8fps
Mono/Color	Mono
Camera Data	
Interface	GigE
Exposure Control	automatic, manual
Power Supply	PoE or 12 VDC
Housing	
Housing Type	Box
Housing Size (L x W x H)	42mm x 29mm x 29mm
Weight	90g
Lens Mount	C-mount
Operating Temperature	0 °C - 50 °C

AREA SCAN CAMERA 12MP, 8FPS, GLOBAL

Sensor	
Sensor Vendor	Sony
Sensor	IMX304
Shutter	Global
Sensor Format	1.1"
Sensor Diaganol	17.52mm
Sensor Type	CMOS
Sensor Size	14.13mm x 10.35mm
Resolution (H x V)	4096px x 3000px
Resolution	12MP
Pixel Size (H x V)	3.45 μm \times 3.45 μm
Frame Rate	8fps
Mono/Color	Mono
Camera Data	
Interface	GigE
Exposure Control	hardware trigger, programmable via the camera API
Digital Input	1
Power Supply	PoE or 12 VDC
Housing	
Housing Type	Box
Housing Size (L x W x H)	50mm x 40mm x 30mm
Weight	90g
Lens Mount	C-mount
Operating Temperature	0 $^{\circ}\text{C}$ - 50 $^{\circ}\text{C}$

AREA SCAN CAMERA 20MP, 5FPS, ROLLING

Sensor	
Sensor Vendor	Sony
Sensor	IMX183
Shutter	Rolling
Sensor Format	1"
Sensor Diaganol	15.78mm
Sensor Type	CMOS
Sensor Size	13.13mm x 8.76mm
Resolution (H x V)	5472px x 3648px
Resolution	20MP
Pixel Size (H x V)	2.4 μm \times 2.4 μm
Frame Rate	5fps
Mono/Color	Mono
Camera Data	
Interface	GigE
Exposure Control	hardware trigger, programmable via the camera API
Digital Input	1
Power Supply	PoE or 12-24 VDC
Housing	
Housing Type	Box
Housing Size (L x W x H)	42mm x 29mm x 29mm
Weight	90g
Lens Mount	C-mount
Operating Temperature	0 $^{\circ}\text{C}$ - 50 $^{\circ}\text{C}$

AREA SCAN CAMERA 20MP, 5FPS, GLOBAL

Sensor	
Sensor Vendor	Sony
Sensor	IMX541
Shutter	Global
Sensor Format	1.1"
Sensor Diaganol	17.45mm
Sensor Type	CMOS
Sensor Size	12.34mm x 12.34mm
Resolution (H x V)	4504px x 4504px
Resolution	20.2MP
Pixel Size (H x V)	2.74 μm \times 2.74 μm
Frame Rate	5fps
Mono/Color	Mono
Camera Data	
Interface	GigE
Exposure Control	hardware trigger, programmable via the camera API
Digital Input	1
Power Supply	PoE or 12-24 VDC
Housing	
Housing Type	Box
Housing Size (L x W x H)	55.5mm x 29mm x 29mm
Weight	105g
Lens Mount	C-mount
Operating Temperature	0 $^{\circ}\text{C}$ - 50 $^{\circ}\text{C}$